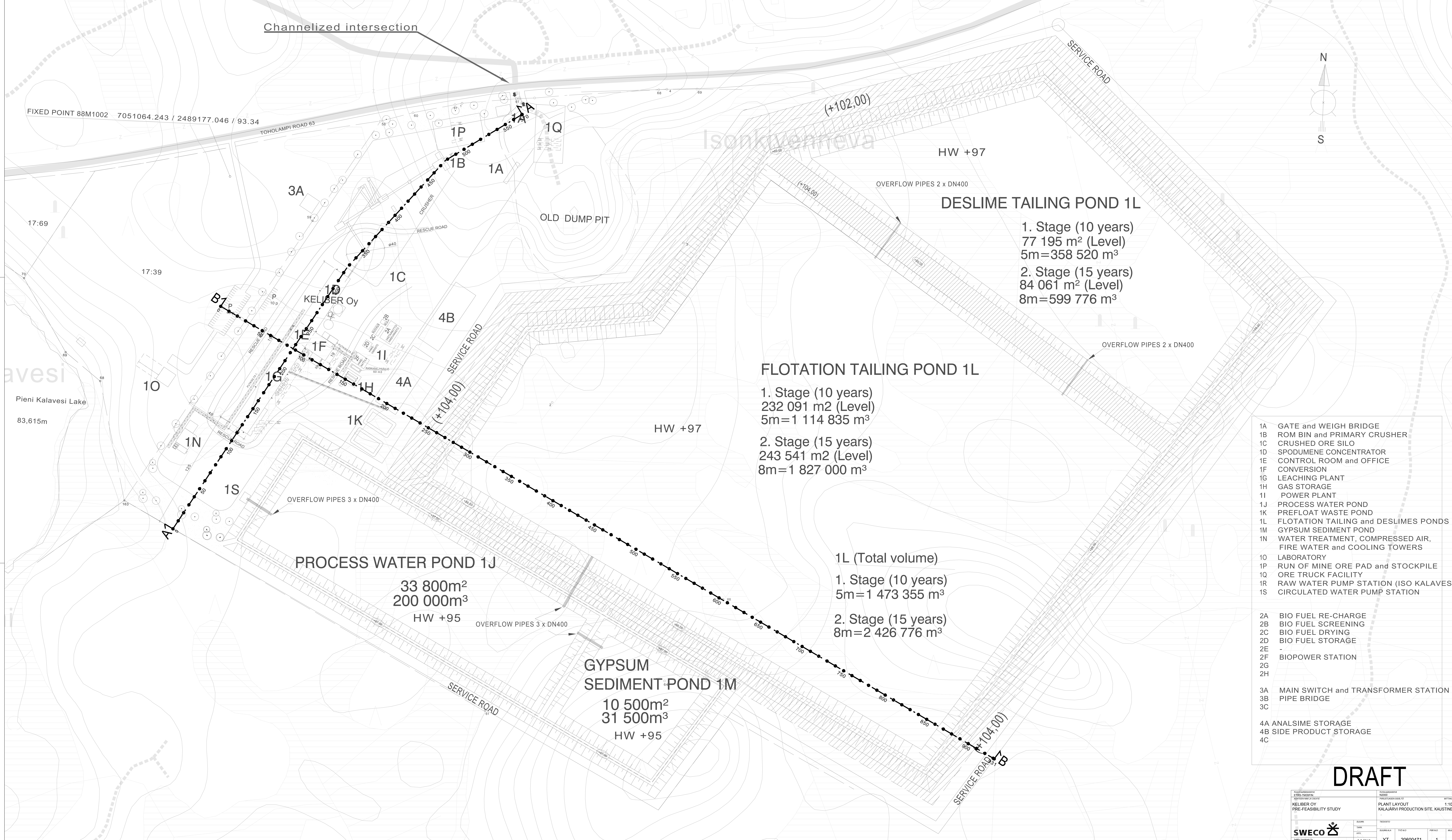
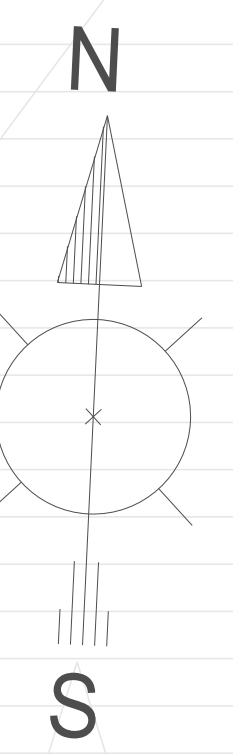


Channelized intersection

FIXED POINT 88M1002 7051064.243 / 2489177.046 / 93.34  
TOHOLAMPI ROAD 63



**DESILIME TAILING POND 1L**

1. Stage (10 years)  
77 195 m<sup>2</sup> (Level)  
5m=358 520 m<sup>3</sup>  
2. Stage (15 years)  
84 061 m<sup>2</sup> (Level)  
8m=599 776 m<sup>3</sup>

**FLOTATION TAILING POND 1L**

1. Stage (10 years)  
232 091 m<sup>2</sup> (Level)  
5m=1 114 835 m<sup>3</sup>  
2. Stage (15 years)  
243 541 m<sup>2</sup> (Level)  
8m=1 827 000 m<sup>3</sup>

**PROCESS WATER POND 1J**

33 800m<sup>2</sup>  
200 000m<sup>3</sup>  
HW +95

**GYPSUM SEDIMENT POND 1M**

10 500m<sup>2</sup>  
31 500m<sup>3</sup>  
HW +95

1L (Total volume)  
1. Stage (10 years)  
5m=1 473 355 m<sup>3</sup>  
2. Stage (15 years)  
8m=2 426 776 m<sup>3</sup>

- 1A GATE and WEIGH BRIDGE
- 1B ROM BIN and PRIMARY CRUSHER
- 1C CRUSHED ORE SILO
- 1D SPODUMENE CONCENTRATOR
- 1E CONTROL ROOM and OFFICE
- 1F CONVERSION
- 1G LEACHING PLANT
- 1H GAS STORAGE
- 1I POWER PLANT
- 1J PROCESS WATER POND
- 1K PREFLOAT WASTE POND
- 1L FLOTATION TAILING and DESLIMES PONDS
- 1M GYPSUM SEDIMENT POND
- 1N WATER TREATMENT, COMPRESSED AIR, FIRE WATER and COOLING TOWERS
- 1O LABORATORY
- 1P RUN OF MINE ORE PAD and STOCKPILE
- 1Q ORE TRUCK FACILITY
- 1R RAW WATER PUMP STATION (ISO KALAVESI)
- 1S CIRCULATED WATER PUMP STATION

- 2A BIO FUEL RE-CHARGE
- 2B BIO FUEL SCREENING
- 2C BIO FUEL DRYING
- 2D BIO FUEL STORAGE
- 2E
- 2F BIOWATER STATION
- 2G
- 2H
- 3A MAIN SWITCH and TRANSFORMER STATION
- 3B PIPE BRIDGE
- 3C
- 4A ANALSIME STORAGE
- 4B SIDE PRODUCT STORAGE
- 4C

**DRAFT**